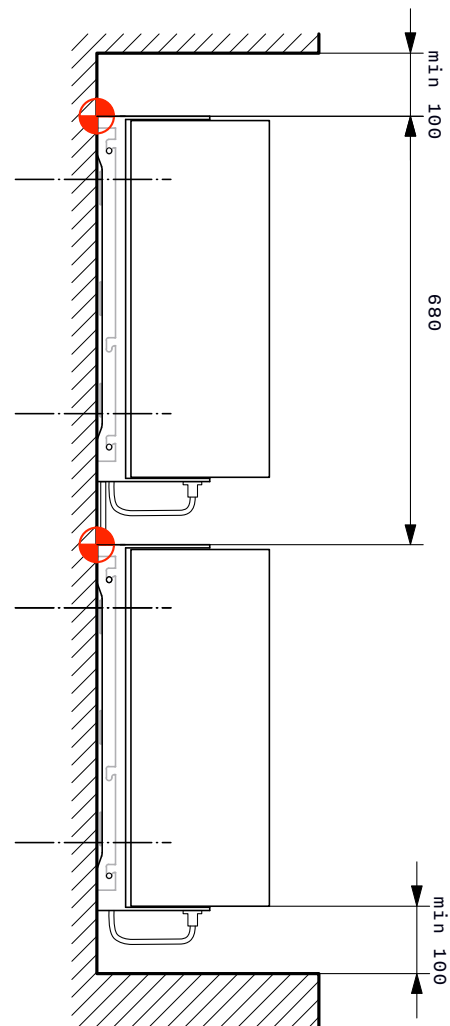
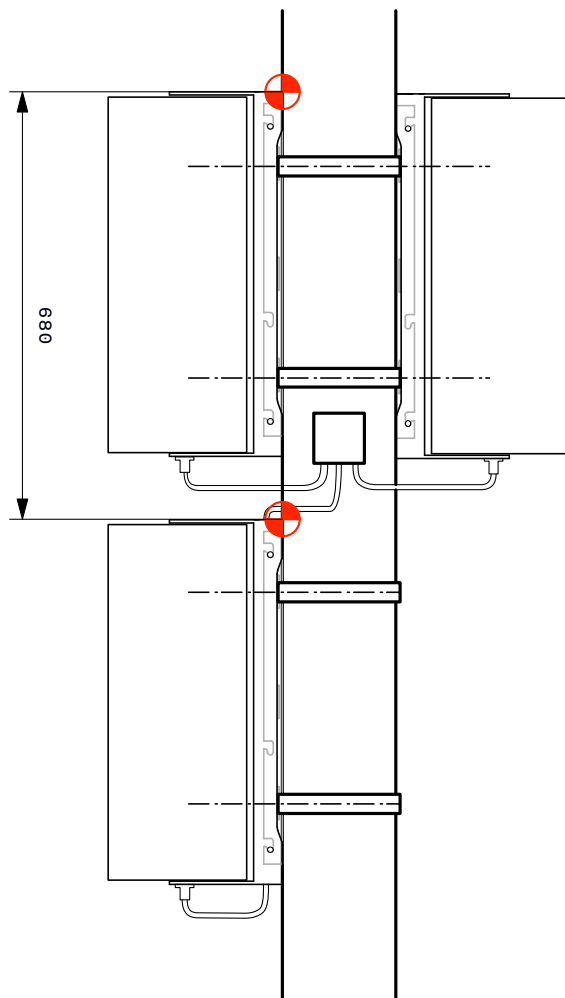
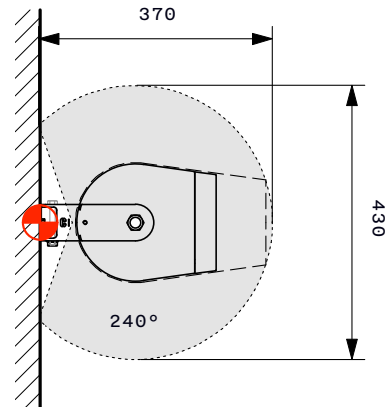


INSTALLATION INSTRUCTION HIT 7000 F PROJECTOR


- Installation of mounting profile with screws or pipe clamps
- Simple hooking of the projector (18kg) into the profile

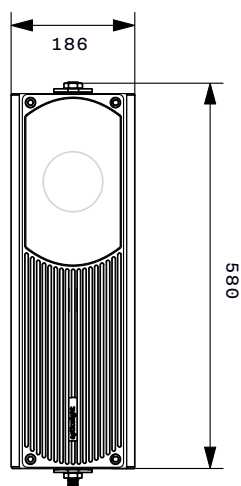
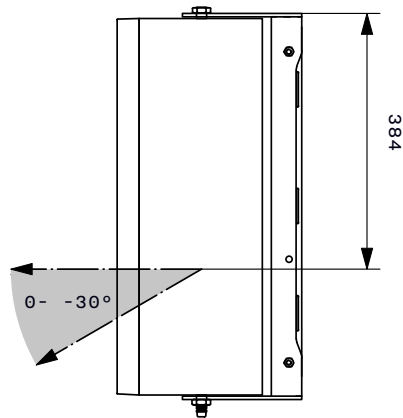
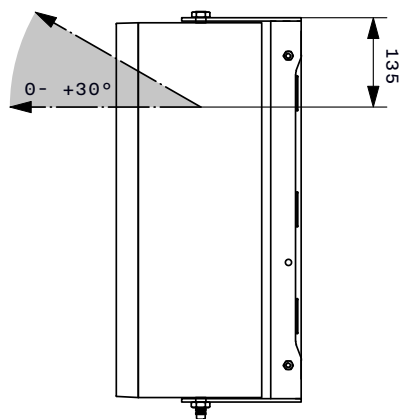
ELECTRIC CONNECTION

The projectors are supplied with a connection cable (2* 0.75 mm², open end, 3m Standard length). Special length and a large variety of connection solutions are available on demand.



MOUNTING

- With our profile on poles, walls and ceiling, in upright or lying position
- A: on solid subsurface with M8 screws or headless screws (max. 40mm protruding).
- B: with chromium pipe clamps
- Accessibility for maintenance has to be guaranteed
-  Symbol of the position indicated in the plans



Mounting profile



A Lying installation on wall with crews



B Upright installation on pole with pipe clamps

